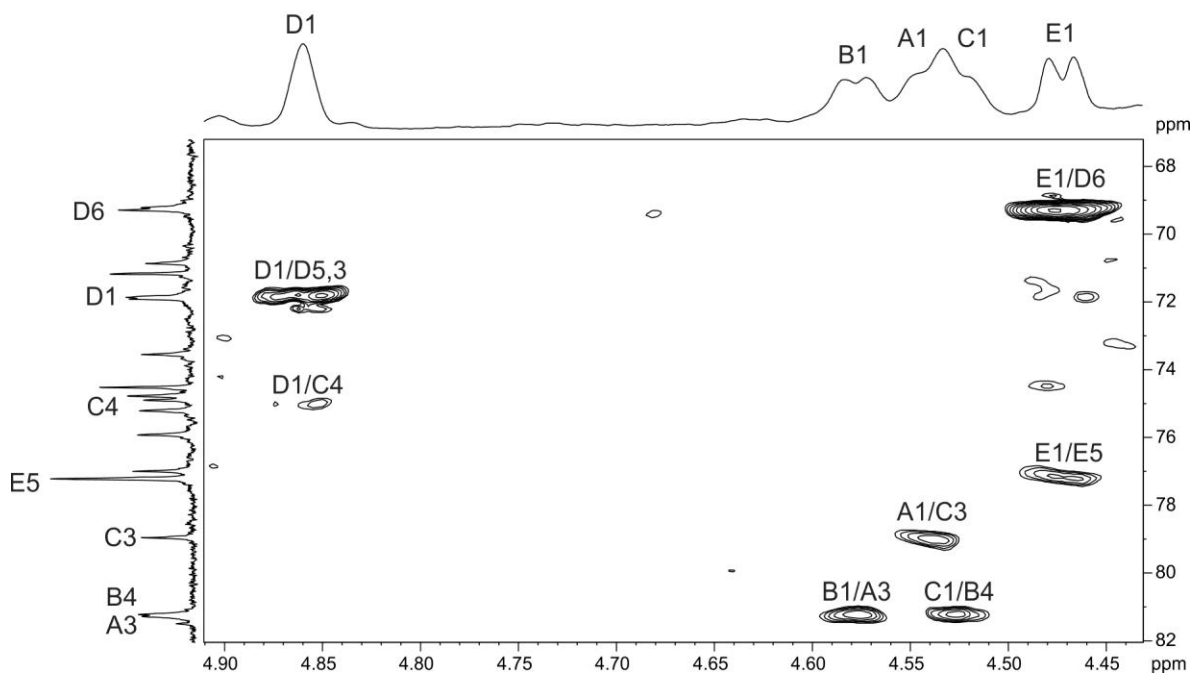
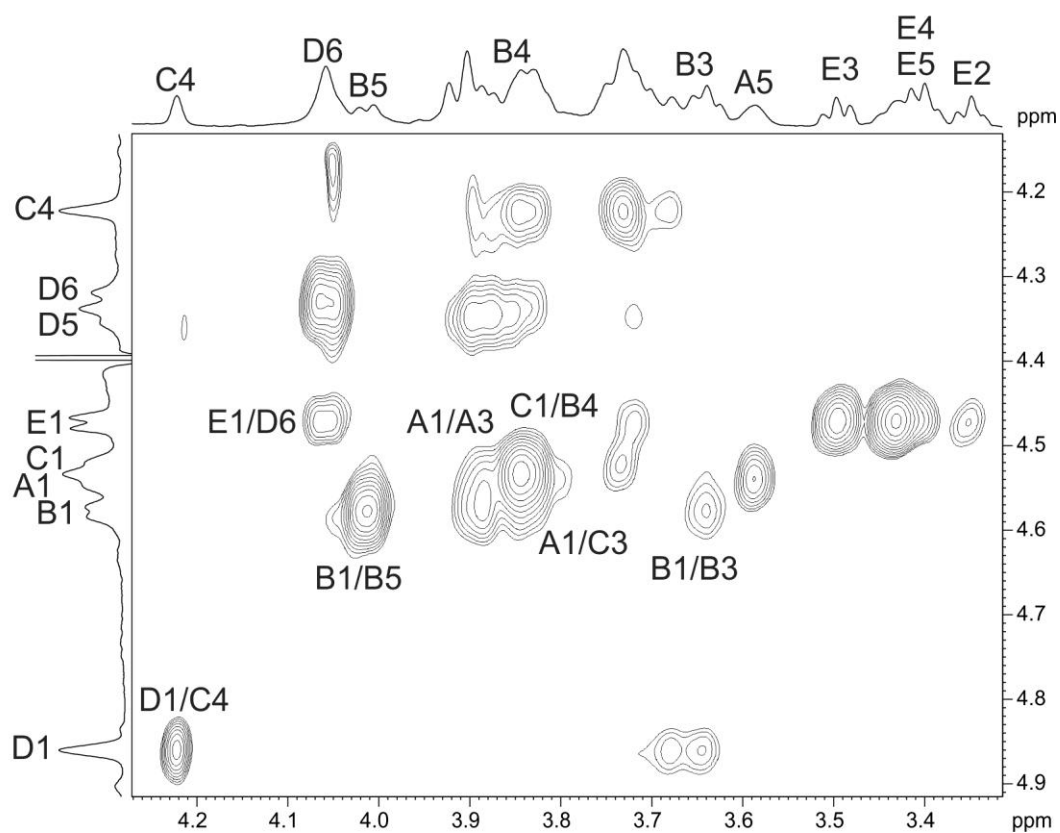


SUPPLEMENT



**Fig. S1.** Fragment of the  $^1\text{H}$ ,  $^{13}\text{C}$  HMBC spectrum of the K32 CPS from *A. baumannii* LUH5549. The corresponding fragments of the  $^1\text{H}$  and  $^{13}\text{C}$  NMR spectra are shown along the horizontal and vertical axes, respectively. Numbers refer to the H/C pairs in sugar residues denoted by letters as indicated in table and Fig. 3.



**Fig. S2.** Fragment of the  $^1\text{H},^1\text{H}$  ROESY spectrum of the K32 CPS from *A. baumannii* LUH5549. The corresponding fragments of the  $^1\text{H}$  NMR spectrum are shown along the axes. Numbers refer to the H/H pairs in sugar residues denoted by letters as indicated in table and Fig. 3.