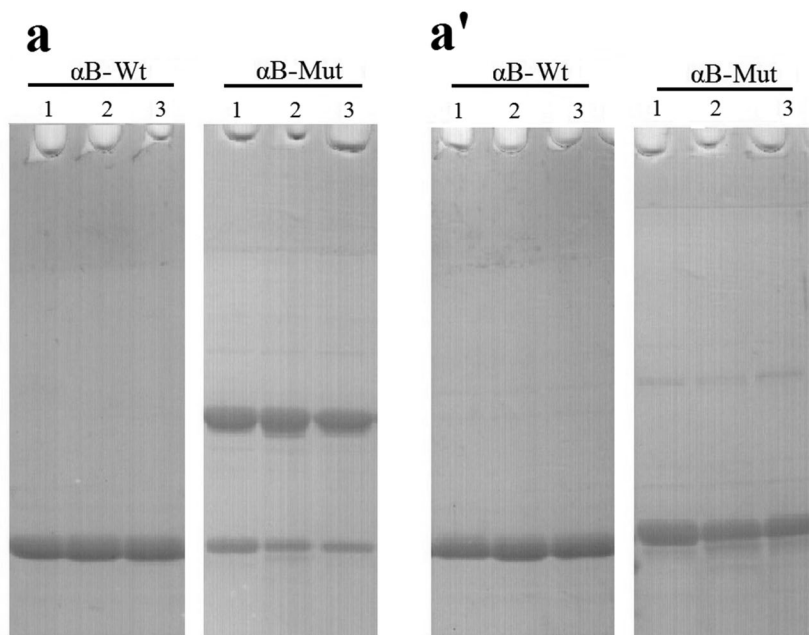


Supplement to: M. Ragerdi Kashani, R. Yousefi, M. Akbarian, M. M. Alavianmehr, and Y. Ghasemi, Structure, Chaperone Activity, and Aggregation of Wild-Type and R12C Mutant α B-Crystallins in the Presence of Thermal Stress and Calcium Ion – Implications for Role of Calcium in Cataract Pathogenesis (ISSN 0006-2979, *Biochemistry (Moscow)*, 2016, Vol. 81, No. 2, pp. 122-134)



Gel mobility shift analysis of the recombinant α B-Cryst after incubation for 24 h in the presence of calcium. The protein samples (1 mg/ml) were individually incubated in the presence of 0 (1), 1 (2), and 5 mM (3) calcium for 24 h at 37°C. At the end of incubations, an aliquot (12 μ g) of each protein sample was taken and subjected to SDS-PAGE analysis (gel 12%) under non-reducing (a) and reducing (a') conditions. The protein bands were visualized by CBB staining